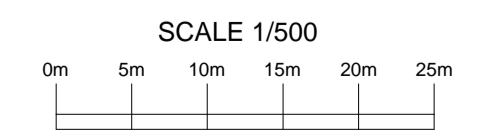
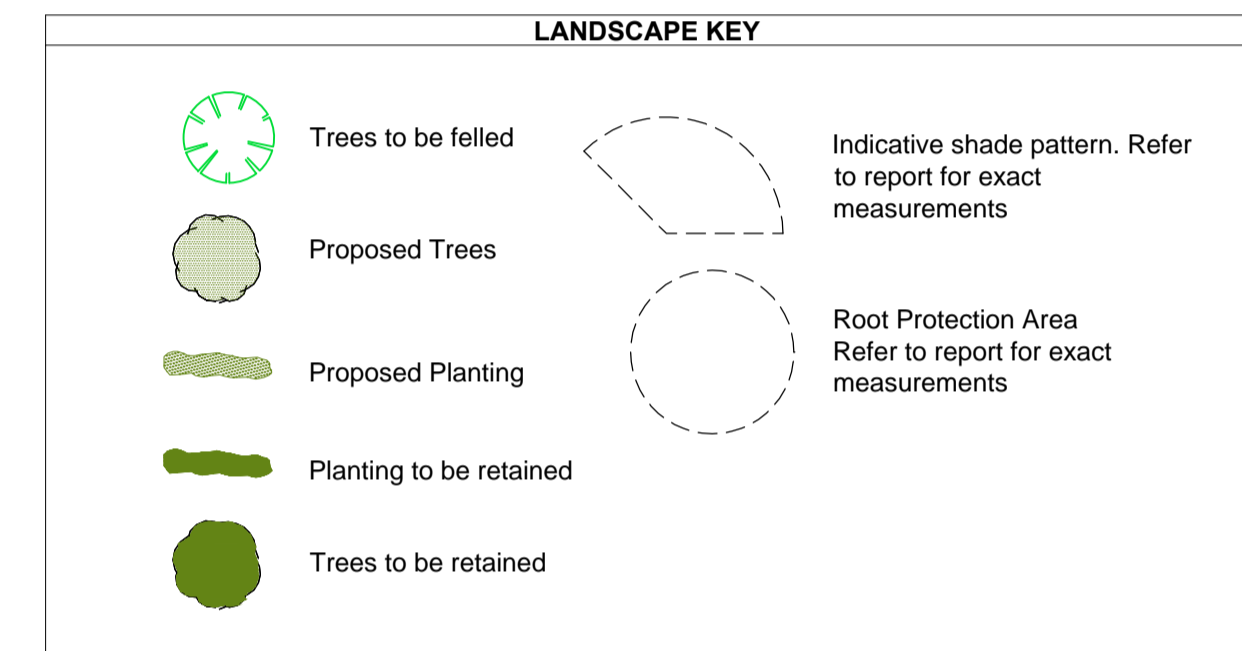


ACCOMMODATION SCHEDULE				
TYPE	PLOTS	BEDS	HT.	TOTAL
Morden	41,42,43	2	2	3
Alnwick	36,37,38,44,45,50,51,52,64,65	3	2	10
Hanbury	11,12,53,54,63,66,75,76,93,99	3	2	10
Rufford	57,58,68,69,72,73,94,98	3	2	8
Chester	05,06,31,32,33,34,39,40	3	2	8
Sourter	09,10,47,48,60,61,70,71	3	2.5	8
Hatfield	16,19,20,22,26,30,35,55,86,88	3	2	10
Clayton	46,49,83,90	3	2	4
Clayton C'	18,21,77,78,87,92,100	3	2	7
Roseberry	03,07,08,13,14,29,95,97	4	2	8
Chedworth	01,04,15,28,96	4	2	5
Chedworth C'	02,27,56	4	2	3
Winster	23,25,59,62,79,82,89,91	4	2	8
Tiverton	17,24,67,74,80,81,84,85	5	2	8
Total				100

BIN COLLECTION POINT SCHEDULE	
BCP	PLOTS SERVED
A	79,80,81,82,83,84,85
B	15,16,17,18,19
C	89,90,91
D	20,21,22,23,24,25,26
E	54,55
F	31,32,33,34
G	37,38,39,40,41,42,43,44



REV	A Correct site boundary shown. Road alignment revised. Plot 55 and 86 changed to Hatfield.	03.08.15
DATE		

PERSIMMON
Persimmon Homes (Anglia) Ltd.
Persimmon House
Cobville Road Works
Oulton Broad
Lowestoft NR33 9QS
Tel 01502 516784

**Mushroom Farm
Martham**

Drawing:
**Planning layout
/Landscape Plan**

Scale:	1:500 @ A1	Drawn By:	JM	Date:	July 2015
Drawing No:	MAR-PL01	Rev:	A		